



**Carlson-Diamond & Wright, Inc.**

25201 Terra Industrial Drive, Suite B,  
Chesterfield, MI 48051

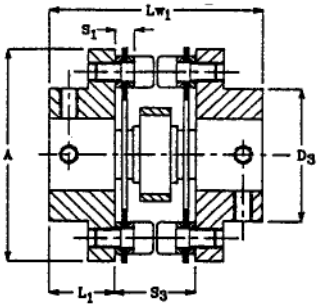
Tel 586 949-5474 Fax 586 949-4041

[www.cdwdrives.com](http://www.cdwdrives.com)

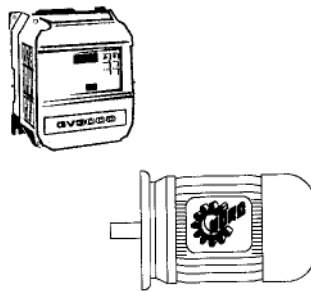


Motion Control • Assembly and Repair • Application Engineering

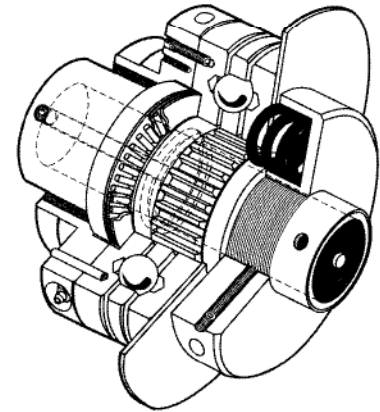
**COUPLINGS - ZERO BACKLASH  
NO - LUBE ETC.**



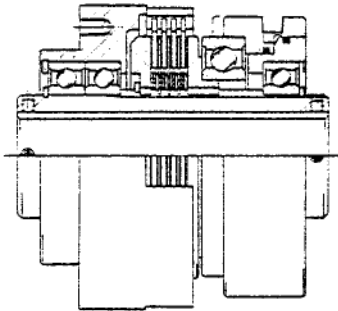
**ADJUSTABLE SPEED DRIVES**



**MECHANICAL TORQUE LIMITERS**



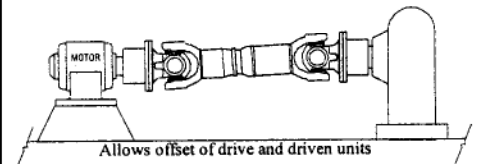
**CLUTCHES & BRAKES  
AIR-ELECTRICAL-MECHANICAL**



**SPEED REDUCERS**

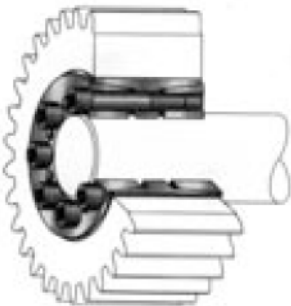


**UNIVERSAL JOINT DRIVESHAFTS**



**FULL SERVICE REPAIR**

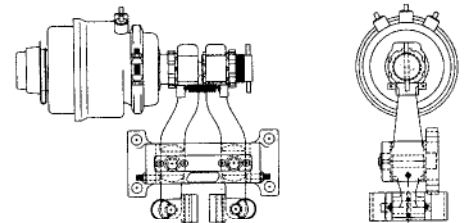
**SHAFT LOCKING DEVICES  
& COLLARS**



**PRECISION HEAT TREATED  
GEAR & RACK**



**E-STOP BRAKES**



**ON DISC OR  
LINEAR RAIL**

**Manufacturers List**

Acme Chain Div. UST  
All Power Transmission  
Alling Lander  
American Autogard  
Ameridrives  
Andco Actuator  
(Dresser/Textsteam)  
Baldor  
B-Loc (Bikon)  
Bowex  
Brewer Machine & Gear  
Carlson Co. (PowerFlo)

Cone Drive  
Cyclo Index  
Dalton Gear  
David Brown  
Drives, Inc.  
Dynacorp  
(Inertia Dynamics)  
FMC Corp.  
(Conveyor Eqpt. Div.)  
FMC Corp.  
(Mat'l Handling Eqpt. Div.)  
Grove Gear

Helland/Zero-Max  
Hitachi Maxco  
HKK Chain  
Horton Mfg. Co.  
Hub City  
Inertia Dynamics  
IPTCI Bearing  
Joyce/Dayton  
Kebco, Inc.  
KTR  
Link-Belt  
Linn Gear Co

Lovejoy  
Marland Clutch  
Martin Sprocket & Gear  
Nexen Group  
Nord Gear  
NSW Belting  
Nuttall Gear  
Omni Metalcraft  
Poly Hi Solidur  
Precision Pulley  
PT Tech  
Ramsey Chain

Reliance Electric  
Rexnord Corp.  
Ringfeder Corp.  
Ringspann Corp.  
Shimpo Drives  
Sier Bath  
Stafford Mfg. Co.  
Stearns  
(Div. Rexnord Corp.)  
Stober Drives  
TB Wood's  
Union Chain Div. UST

US Tsubaki  
Van Gorp  
Van Zeeland Mfg.  
Von Ruden  
Webster Industries, Inc.  
Winsmith  
Zero-Max